

A Christ-centered community of faith growing in God's truth and grace

Ministry Guide

2008-09

158 Penn Ave.

Reading, PA 19611

Phone: 610.376.0390

Fax: 610.376.0392

pastormel@ChristPresReading.org

www.ChristPresReading.org

Table of Contents

The Challenge of Greater Reading.....	3
The Opportunity for Ministry.....	3
Core Values and Strategies for Ministry.....	4
Ministry Plan and Opportunities	10
Membership Commitment	16
Church Financial Plan for 2008-2009	18
Appendix I: A Pastor's Booklist	24
Appendix II: Personal Involvement in the Spread of the Gospel in Reading and Berks County	29
Notes.....	31

The Challenge and Opportunity of Greater Reading¹

- The population of Berks County is 72.8% urban?²
- And while development growth continues to the north and west of the city, the city itself continues to grow rapidly as well?³
- 63% of all new movers in Berks County relocated to the urban ring of Reading.⁴ Berks County ranks 52nd out of 67 counties in PA in percentage of evangelical adherents at less than 4% of the total population?⁵
- Note that there is *no longer a majority population* in the Reading city limits.⁶ When the statistical area is broadened to a 15-mile radius around the city of Reading,
 - The total population climbs to over 455,000
 - "...based upon the total number of groups present, the racial/ethnic diversity in the area is *very high*."
 - By 2009, the Anglo population will *decrease*, the African-American population will remain stable and the Hispanic and Asian populations will both *increase* as a percentage of the total population.
 - And the "lifestyle diversity in the area is *extremely high*"⁷

Our Vision⁸

"A Christ-centered, worshiping Christian community, full of grace and truth, drawing the nations to Christ at the human crossroads of Greater Reading".

Our driving question must be: In light of what we believe about the Gospel, how can we best position ourselves strategically to fulfill the "last command" of the Lord Jesus Christ?

Matthew 28:19-20 (ESV) Go therefore and make disciples of all nations, baptizing them in the name of the Father and of the Son and of the Holy Spirit, teaching them to observe all that I have commanded you. And behold, I am with you always, to the end of the age."

Core Values and Strategies for Ministry

1. Christ-centered

- ❖ We desire to be a church united by our common faith in Jesus Christ, embracing God's people from the diverse cultural, ethnic, educational and socio-economic backgrounds of the Reading metro region. We envision a church where Jesus Christ, revealed in the Scriptures, is the center of our lives, and where the Lord's Supper, celebrated each Sunday, becomes the visible sign of our inward spiritual union with Christ and one another and the basis for tangible acts of mercy and love.

Ephesians 4:4-6 (ESV) There is one body and one Spirit—just as you were called to the one hope that belongs to your call—one Lord, one faith, one baptism, one God and Father of all, who is over all and through all and in all.⁹

- ❖ We want there to be *nothing to compel* anyone, except the gospel, and *nothing to repel* anyone, except the offense of the cross of Christ. We believe that the waters of baptism form a stronger bond than any other human connection based on family ties, educational level, income, race, ethnic origin, gender, political affiliation or any other human distinction. Therefore the church's identity could well be summarized by the description given it in the Apostle's Creed of the 2nd century and in the Nicene Creed of the 4th century; that we desire by God's grace to be "one, holy, catholic and apostolic church":
 - Christ Presbyterian is *one* in our spiritual relationship together in Jesus Christ, the head of the church. Christ saves us and then places us in His church. Our outward and visible fellowship and service is the fruit of our inner union with Christ through the Spirit by faith in the promises of the gospel. It is expressed outwardly by our common confession of faith in Jesus Christ.
 - Christ Presbyterian is *holy* in that her worship and mission are for the Lord Jesus Christ's goals, not the goals of any earthly kingdom or cultural or political agenda of the left or the right. We are dedicated exclusively to the mission given by Jesus Christ in the Scriptures.
 - Christ Presbyterian is *catholic* (universal) in that we desire to welcome God's people from all kinds of backgrounds. We affirm a vision for ministry that seeks to bridge, as much as humanly possible, income, gender, class, race and ethnic boundaries. We believe it is first and foremost in the church that the true unity of humanity is to be found, as we are first reconciled to God and then to each other, through Jesus Christ, by the Holy Spirit.
 - Christ Presbyterian is *apostolic* in that we seek to be a church that lives according to the teaching and practice of Christ's apostles in the Scriptures.
 - Therefore, we are committed to the following Ministry strategies:

- Since Christ is revealed to us in the totality of the Scriptures,¹⁰ the centrality of *preaching* Christ from the whole Bible to the whole person will be at the heart of every activity of the church. The centrality of *experiencing* Christ's body and blood in the Lord's Supper will be at the core of our life as a Christian community. Thus, we are committed to Christ-centered, consecutive expositional preaching and weekly celebration of the Lord's Supper.
- We maintain a preference for a “no-distinctions” approach to ministry, except when the church's mission can be accomplished in no other way – i.e., a general preference for a “heterogeneous” rather than a “homogenous” ministry style.
- We are a self-consciously *confessional* and *inclusive* church – indeed, a church where confessionalism is the means of inclusivity.

2. Genuine Worship

- ❖ We envision a rich, full worship that celebrates the full range of a covenant relationship with God every Sunday and invites non-believers to that covenant relationship with God through faith in Jesus Christ.

“But you [are] a chosen generation, a royal priesthood, a holy nation, His own special people, that you may proclaim the praises of Him who called you out of darkness into His marvelous light;” (1 Pet. 2:9)¹¹

- We want to experience true worship – in a way that first pleases God, then engages the minds and hearts of believers, and also draws unbelievers to faith in Jesus Christ.
- Worship lifts the heart of the believer to the presence of God, filling it with the goodness of God through the ministry of the Spirit working through the “means of grace.” It presents God in all his majesty and beauty in an appeal to the unbeliever to be reconciled to God in Christ. Therefore, our priorities in worship are:
 - *God-honoring* worship directed and controlled by the Scripture
 - Engaging *heart-felt affections* of all the members in covenant-*renewal* worship. We will seek a rich, meaningful worship, where the worship of God, His law and covenant, blends with our corporate response of prayers, praises and confessions to produce a beautiful medley of God's heavenly glory and earthly presence in affectionate covenant renewal between God and His redeemed people.

- *Inviting* unbelievers to the gospel in covenant-*initiation* worship. We will seek to structure worship in such a way as to welcome all members and potential members of God’s covenant family, without regard to their race, ethnic origin, age, or any other human distinction, recognizing only the distinction between those inside and those outside God’s covenant family.
- Therefore, our Ministry strategies will focus on:
 - Music that is doctrinally sound, accessible to the congregation and sung with music appropriate to both the content and the congregation (i.e., we are not going to identify ourselves in worship by a particular style or taste, such as “traditional” or “contemporary”, but will use an ordered priority of values to give form and beauty to our worship).
 - Affectionate, heart-felt reverence in worship-leading
 - Regular training for musicians and music directors in principles and practice of worship
 - Using opportunities throughout the service to invite the unbeliever to repentance and faith
 - Preaching and worship that preaches to the “empty chairs” – those who are not there whom we would like to be there.
 - Training in developing personal and household worship throughout the week

3. Healthy Christian Community

- ❖ A healthy church will be a growing and reproducing church. Our goal is to lovingly lead sinners toward life-long allegiance to Christ through baptism, the Lord’s Supper and church membership, and then see this growing Christian community birth more such churches in a church-planting movement for Reading and Berks County.

Acts 15:40-16:5 (ESV) ... Paul chose Silas and departed, having been commended by the brothers to the grace of the Lord. And he went through Syria and Cilicia, strengthening the churches... Paul wanted Timothy to accompany him... As they went on their way through the cities, they delivered to them for observance the decisions that had been reached by the apostles and elders who were in Jerusalem. So the churches were strengthened in the faith, and they increased in numbers daily.¹²

- We believe in the *local, visible Church* as an essential part of our Christian commitment and a key benefit given to us by Christ.
- We want to be a *sacramental* community that is drawn to and lives out the reality of union with Christ and one another as seen in the Lord's Table.

- We desire to be a *growing* community, to fulfill Christ’s command to make disciples of all nations by planting churches, so that we are not just a church plant, but also a church-planting *movement*, with a mission so big that only the Holy Spirit could accomplish it.
- Therefore, our Ministry strategies will focus on:
- Relational evangelism focused on the natural networks God puts together through the people He brings as members
 - Community groups, Bible studies and discipleship training for men and women
 - opportunities for members to receive regular pastoral visitation and care by the pastors and elders, and pastoral outreach through individual networks into the communities represented by members
 - We envision a church community that loves mercy and preaches the gospel in both words and deeds to all who will listen, sharing in the sufferings of the poor and oppressed of Christ’s Church
 - A dependence on God in prayer seen in all the ministries of the church. Prayer-based ministry, individually, in families, and in small groups will be the only basis of our confident expectation of success as a church.
 - We will search for church-planting interns committed to Reformed theology, ecclesiology and mission. We will design a strategy to integrate interns into the total ministry of the church, so as to acclimate them to the full-scale work of church-planting. Given the diverse ethnic make-up of Greater Reading, we will seek interns who represent that demographic mix and who are committed to ministerial training and church planting within their respective ethnic groups.
 - We will seek to take advantage of opportunities to plant new churches, as far as God enables us.

4. Nourished on Truth, Growing by Grace

- ❖ We envision a church that is winsome in its presentation of Christ to nonbelievers, that understands the radical nature of the Cross, of grace and redemption for sinners. We envision a community where we begin with the assumption of our brokenness and spiritual flaws, where it is safe to be nothing but a redeemed sinner beloved of God solely through the sacrifice of Jesus Christ. We desire to put theology back into the pews in the service of Christian discipleship – i.e., the better we know God, the more we love him, and the more we love him, the better we serve him. We want God’s transforming grace in Christ to be the driving force of Christian living and discipleship. We want to grow in a deepening, practical understanding of the “doctrines of grace” as the transforming power for recovering sinners and idolaters – all of us! We believe that these doctrines of God’s grace revealed in the Bible (sometimes referred to as Reformed or Calvinist theology) best explains the totality of scripture, and, when practiced, produces the best spiritual growth.

"To them God willed to make known what are the riches of the glory of this mystery among the Gentiles: which is Christ in you, the hope of glory. 28 Him we preach, warning every man and teaching every man in all wisdom, that we may present every man perfect in Christ Jesus. 29 To this [end] I also labor, striving according to His working which works in me mightily." (Col. 1:27-29)¹³

Hebrews 13:9 (NRSV) ... it is well for the heart to be strengthened by grace, not by regulations about food, which have not benefited those who observe them.

- Therefore, our ministry strategies will focus on "the gospel circle"
 - God calls His people from every conceivable human condition, so mature discipleship begins with good evangelism! We will reach out to the world with an evangelistic method and pastoral care, the goal of which is to result in mature disciples of Christ, people that will have confidence on the day of judgment that they will receive God's salvation, and who have borne in their lives the fruits of Christian faith, and who themselves are reproducing gospel outreach among their own social networks.
 - We will embrace thorough ongoing theological and practical training and accountability for those who serve and teach in the church.
 - We will focus a Christian Education ministry that hands on the faith to the next generation through catechizing, training in the story of the Bible and the doctrines of grace.
 - We will pursue ongoing officer training that is continually training ordained lay leaders to be winsome evangelists, wise shepherds and Biblical servant-leaders for the people of God. Officer-training will focus on producing those seeking the conversion and care of souls, not merely decision-makers concerning policy of the church

5. A Love for the City

- ❖ We envision a church community that embraces the crossroads of humanity at the center of the city of Reading, knowing that "where sin abounds, grace abounds all the more". Rather than seeing the tension of urban life as a threat to Christian values, our goal will be to integrate ourselves into the heart of Greater Reading so that the gospel may work its transforming power in its complex needs. The population growth rates and densities indicate that Reading is the social center of Berks County, even as growth continues in the outlying areas. Additionally, the city government has mounted an aggressive long-term campaign to revitalize downtown Reading and attract people back into the city both during and after work hours. This means that the city will most likely continue to grow in its importance as an educational, financial, economic and social integrator. In the providence of God, He has brought together a multitude of the nations of the world, as well as many social and economic classes together into one metropolitan area. We want to situate the mission of the church in its location and programming in such a way as to impact the academic, professional, immigrant, urban poor and suburban communities in and around the city.

Titus 1:5 (ESV) This is why I left you in Crete, so that you might put what remained into order, and appoint elders in every [city] as I directed you—¹⁴

Genesis 18:20-32 Then the Lord said, "Because the outcry against Sodom and Gomorrah is great and their sin is very grave, I will go down to see whether they have done altogether according to the outcry that has come to me. And if not, I will know." ... Then Abraham drew near and said, "Will you indeed sweep away the righteous with the wicked? Suppose there are fifty righteous within the city. Will you then sweep away the place and not spare it for the fifty righteous who are in it? ..." He answered, "For the sake of ten I will not destroy it."

Jonah 4:11 And should not I pity Nineveh, that great city, in which there are more than 120,000 persons who do not know their right hand from their left, and also much cattle?"

Acts 8:5-8 Philip went down to the city of Samaria and proclaimed to them the Christ. And the crowds with one accord paid attention to what was being said by Philip when they heard him and saw the signs that he did. For unclean spirits came out of many who were possessed, crying with a loud voice, and many who were paralyzed or lame were healed. So there was much joy in that city.

- We want to be a Greater Reading church that reaches the city of Reading, as well as the surrounding communities to bring together the elect of God in true Christian fellowship. We believe that Christ's mission for his church is best fulfilled, in our context, at the human crossroads in Greater Reading. This strategic vision brings together our mission, best use of resources and the greatest needs.
 - Therefore, our ministry strategies will focus on
 - A study, ministry and worship center situated at the human crossroads of Greater Reading.
 - ministry to the academic community that integrates with the local church: Albright College, Alvernia College, Penn State – Berks, Kutztown University and RACC
 - Youth outreach and ministry¹⁵
 - ministry to the surrounding communities: home fellowship groups, evangelistic studies
 - ministry to the international community: immigrant outreach, international student outreach
 - mercy ministry to the poor: giving the gospel in word and deed to the poor, following Christ's example. Mercy ministry. Possibilities include English as a Second Language (ESL) programs, and Bible studies targeted at the various majority and minority culture communities represented in Reading
 - ministry to the governing authorities: a prophetic witness of integrity and justice to the "powers that be"

Ministry Plan and Opportunities

Evangelism & City Outreach – Deb Leisey

The plan is to focus on two avenues for outreach for the coming year. The two main focus points will be the Outgrown and Exchange, which we will have twice a year. Once in the Spring and then again in the Fall. This will allow the church to focus on us being an outreach to the community directly from our church building

The second focused outreach will be working with Bridge of Hope. We will be working with Bridge of Hope to partner with them on any administrative, childcare support as well as helping them in their fundraising efforts.

Any other opportunities for outreach will be communicated to the congregation via the bulletin. These opportunities are open to anyone who feels the Lord's calling to help.

Fellowship – Salome Tiemann

Sunday, August 31 – Potluck Lunch & Pool Party at Deb Leisey's home

October – Family Game Night at the church

Christmas Season

- Kid's Christmas Craft Night at the church
 - Fellowship/Refreshments after special Christmas service
- February – Joint “Welcome Baby” Party for the Jones, Hicks, and Clark babies

Activities for April and June to be determined (Reading Phillies game?)

We will once again be having Potluck Lunches, once a quarter, hosted by the Sensenigs.

Tentative Dates:

- (none for September d/t Potluck Lunch & Pool Party in August)
- December 7
- March 1
- June 7

Community groups

- Russ Hobaugh and Dan Tubbs
- Rick Smith and Ekinde Ngome
- Bill Cerynik and Jeremy Clark

Community groups meet in communities in and around Reading and are the primary vehicle for “being the church” and practically living out our common life as a family of faith in Reading. It is our goal to have every member involved substantially and a community group.

This year, the plan is to:

- Gather 2x per month
- General Structure--Meal/Snack, 20-40 minutes of Bible study, prayer (Total time = 90 min - 2 hours)
- Continue studying James. All groups covering same material for unity and continuity
- No homework/preparation expected except for reading the passage at hand
- Sunday late afternoon/evening has seemed most workable in the past.

link below and it will tell you about the book we are studying and how the online study will work. If for some reason, you cannot attend a weekly study, you are welcome to do the online study. And, if you join the weekly study and miss a week you may take part in the online study so you don't miss out on a discussion.

<http://oursovereigngod.blogspot.com>

Pastoral Visitation – Pastor Mel Sensenig

These meetings are voluntary, and are not simply for the purpose of friendship or getting to know the pastor better, but are rather so that we can ask you some simple, fairly standard questions about your spiritual life and help to identify any area where we as a church might better be able to serve you in your spiritual growth and walk with Christ.

Some things we will discuss are:

1. Are you understanding and applying the gospel regularly in your life?
2. Do you struggle with assurance of your salvation?
3. Do you experience a sense of the forgiveness of sin?
4. Are you currently enjoying God in your life or has your spiritual life become a burden, or worse, boring?
5. What are you currently experiencing that is putting a strain on your faith?
6. Where do you feel you most need to grow as a Christian?
7. Do you look for opportunities to share your faith? Is there anyone right now in your life that you are sharing your faith with?
8. Other areas of spiritual growth that you may wish to discuss.

Generally, these will be held the 1st and 3rd Tuesday nights of each month at the church, two families per night (so, don't worry – it can't get too long 😊).

Membership at Christ Presbyterian Church

At Christ Presbyterian, we believe that church membership carries with it both great privileges and great responsibilities. Therefore, it should be entered into only after due consideration has been given as to what membership involves.

Requirements for Membership

Any person shall be eligible for membership, who trusts in the finished work of Christ for salvation, professes repentance toward God, has been baptized (or will be baptized upon joining), is willing to submit to the government and discipline of this church, and intends to give wholehearted support to its ministry.

Reception of New Members

The first step toward pursuing membership is to contact the pastor concerning your interest in membership. If, after that interview, you feel called to join Christ Presbyterian church, you will be given the opportunity to sign up for a membership interview. The purpose of the interview will be to examine you as to a credible profession of faith in Jesus Christ. A New Members' class is normally offered at least once a year. It is required that you take this class either before or as soon after joining Christ Presbyterian as possible.

Conduct Expected of Members

The Church expects its members to live in such a way as becomes the followers of Christ. Needless to say, we all at times fall short of these standards. But our desire should be to please Christ in all areas of our life.

Individual Responsibilities

Each member is expected to cultivate a personal relationship with the Lord by prayer and reading and meditating on the Word of God.

Each member of the church is expected to seek to live in loyal obedience to God's will as revealed in his Word. If God has not forbidden a particular practice in his Word, the Christian is free to participate in it. However, we must always make sure that the use of our freedom is directed toward the love of others and God. (Gal. 5:13-15)

It is the Church's duty to proclaim the Gospel of Christ to the world. While not all members have the same set of responsibilities in this area, all members are responsible to recognize and seize opportunities to bear witness to the Gospel by their lives and words.

Family Responsibilities

We are committed to the growth and development of strong families under the guidance of God's Word. Husbands and wives are to live faithfully committed to one another in love after the pattern set out in Ephesians 5:21-33. In the area of child rearing, fathers and mothers must "nurture their children in the training and instruction of the Lord" (Ephesians 6:4) by setting a godly example before them, by instructing them consistently in the Scriptures, by praying with and for them, and by disciplining them in wisdom, firmness and love (Proverbs 13:24; 22:15; 29:15; Hebrews 12:7). Parents are strongly encouraged to teach their children the doctrines of the Christian faith as summarized in the Westminster Shorter Catechisms. Families are expected to establish the regular practice of family worship consisting of the singing of hymns, the reading of scripture and the offerings of prayer to our Heavenly Father.

Church Responsibilities

Regular Attendance

All members are expected to be faithful and regular in their participation in Lord's Day worship unless providentially hindered; we believe this to be a duty, not an option. With regard to other church activities (such as Sunday school, small groups, and men's and women's groups), members are strongly encouraged to take advantage of such opportunities in an effort to grow in God's grace and build up the body of Christ. (Acts 2:42; Hebrews 10:24-25).

Service

Every member of this church has been placed here by God, not only to receive ministry, but also to render service to the body of Christ. Therefore it is important for every member, with the help and guidance of the Church, to diligently search for opportunities to serve in the body of Christ. (Ephesians 4:7,16; Romans 12:4-8; 1 Corinthians 12:7).

Promotion of Edification and Peace

We are many members but one body, and thus we should all strive for the health and peace of that body (1 Corinthians 12:12-27; Ephesians 4:4,11-6). Members therefore ought actively to cultivate relationships with one another so that they may be better able to pray for one another; to love, comfort, and encourage one another; to bear with one another and forgive whatever grievances they may have against one another; and to help one another materially as occasion may require. Members ought to be careful to season their speech with grace such that the body of Christ is built up in peace. If one member notices another in sin, that member ought to follow the instructions of Matthew 18:15-20, namely, to go to that person in private having said nothing to anyone else. If this fails, take another member, preferably an elder, to talk with the person. This failing, the issue ought to be brought to the attention of the session of elders (representing the whole church) for further instruction and discipline.

Systematic and Proportionate Financial Support

It is clearly taught in Scripture that it is the duty and privilege of all Christians to support financially the work of the Kingdom of God. Members should be committed to regular, proportional, significant, and sacrificial giving to the Lord's work. No precise amount or percentage has been prescribed under the New Covenant. While Biblical example seems to suggest 10% or more of a person's or household's income, the precise determination of how much to give is left to the individual believer's conscience. Any member otherwise in good standing who finds himself or herself unable to contribute to the church should not hesitate to ask for financial assistance. We should all be seeking to grow in the grace of giving and to demonstrate our commitment to Christ and his Kingdom in this most tangible and measurable way. (1 Corinthians 16:1-4; 2 Corinthians 8 and 9).

Support of and Submission to Leadership

All who join this Church are expected to support and submit to the authority of the pastor and the elders of the Church who support the pastor in his ministry. Supporting the pastor and elders involves respecting them (1 Thessalonians 5:12-13); praying for them and their shepherding labours (Ephesians 6:18-20); and not entertaining false accusations against them (1 Timothy 5:19). Submitting to the elders entails heeding their teaching of and counsel from the Scriptures as those appointed to watch over the souls of Christ's flock (Acts 20:28; Colossians 1:28; 1 Timothy 3:5; Hebrews 13:17; 1 Peter 5:1-4). As a church plant, the authority of this local congregation is given to the pastor, working under the oversight of the Church Planting and Outreach Committee of the Susquehanna valley Presbytery. More

information will be given in the future regarding the process by which the congregation eventually will call her own elders.

Prayer

Members ought to pray regularly for the church-- namely, that Christ may be glorified through the making of disciples by the preaching, teaching and administration of the Word of God in the power of the Holy Spirit. A church prayer guide has been made available to members so that they may pray regularly and intelligently for Christ Presbyterian Church to the glory of Christ our only Head and King.

Uniting with Christ Presbyterian Church

By Profession of Faith

This occurs when a person has recently come to know Jesus Christ as Lord and Savior and thus has no existing affiliation with a church.

By Transfer

We will receive into our membership by a letter of transfer anyone who is a member in good standing of an evangelical church.

By Reaffirmation of Faith

Those who cannot secure a letter of transfer (some churches do not grant letters to churches outside their own communion), or who have been inactive and wish to make a fresh beginning in the Christian life and re-dedicate themselves to God, are received on their own statement of faith in Christ.

Note: Baptism is required of all seeking membership unless the applicant has previously been baptized.

Termination of Membership

By Physical Death

When a member of the Church is removed from our midst by death, his/her name shall automatically be removed from the membership roll.

By Transfer

When it is so requested, the Session may grant to a departing member in good standing a letter of dismissal to the fellowship of another church. No such letter may be given to a member who is at the time under the corrective discipline of the Church. The Session may refuse to grant a letter of transfer to any church which is, in its judgment, disloyal to the basic tenets of Biblical Christianity.

By Excommunication

According to the teaching of Scripture, a congregation must remove from its fellowship and visible membership one who insists on teaching or holding a heretical doctrine or who blatantly and persistently conducts oneself in a manner inconsistent with one's Christian profession (Matthew 18:15-20; 1 Corinthians 5:1ff). Excommunication is a last resort, to be used only after all other means of reclaiming the offending party have been exhausted. Its ultimate purpose is to promote the glory of God, to maintain the purity of Christ's church and to reclaim a wayward person. All church discipline shall be carried out in accordance with the Book of Church Order of the Presbyterian Church in America.

Membership Commitment

(Must be signed and received by the pastor prior to membership)

Membership Vows

- ❖ I acknowledge myself to be a sinner in the sight of God, justly deserving his displeasure, and without hope, except through his sovereign mercy.
- ❖ I believe in the Lord Jesus Christ as the Son of God and Savior of sinners and receive and trust him alone for salvation as he is offered in the Gospel.
- ❖ I now resolve and promise, in humble reliance upon the grace of the Holy Spirit, that I will endeavor to live as becomes the followers of Christ.
- ❖ I promise to support the Church in its worship and work to the best of my ability.
- ❖ I submit myself to the government and discipline of this church and promise to strive for its purity and peace. (Note that this vow includes the following promises):
 - I promise my pastor: to continually receive him personally as my pastor, to receive the word of truth from his mouth with meekness and love, and to submit to him in the due exercise of discipline. I promise to encourage him in his labors, and to assist his endeavors for my instruction and spiritual edification. And along with the whole church, I promise to provide him that competent worldly maintenance which we have promised, and to furnish him with whatever we may see necessary for the honor of religion and for his comfort among us.
 - I promise my ruling elders and deacons: to acknowledge and receive these brothers as ruling elders and deacons, and promise to yield them all that honor, encouragement and obedience in the Lord to which their office, according to the Word of God and the Constitution of this Church, entitles them.¹⁶

My signature below signifies that I have read the Ministry Guide and express my willingness to give sincere assent to the membership responsibilities and vows.

Date: _____

Head of Household: _____

Spouse: _____

Communicant child: _____

Communicant child: _____

Communicant child: _____

Names of Non-communicant children:

Previous Church membership (Name, address and dates):

Church Financial Plan for 2008-2009

Budgeting is determined by our theological and mission values as spelled out in this document. Thus, this budget, along with the ministry schedule above is an attempt to work out these values throughout the course of the year. It is a mission-driven plan for how we desire to invest the resources God provides for us. It is dependent upon God's blessing and subject to presbytery approval and change as needed.

	2008-9
Income	
INCOME	
Collections	65,450.00
CP Fundraising	44,152.55
Susquehanna Valley Pres	35,000.00
Total INCOME	\$144,602.55
Total Income	\$144,602.55
Expenses	
5000 ADMINISTRATION / FINANCE	
Accounting	525.00
Bank Charges	383.79
Equipment - Purchases	163.27
General Assembly	845.00
Insurance - liability	535.00
Insurance - Workers Comp	687.00
Legal & Professional Fees	1,576.32
Miscellaneous Office	924.57
Postage	603.59
Supplies	1,961.44
Telecommunications	2,668.12
Total 5000 ADMINISTRATION / FINANCE	\$ 10,873.10
5500 MERCY MINISTRY/DIACONAL NEEDS	
Diaconal Needs	1,574.95
Mercy Ministry Outreach	202.00
Total 5500 MERCY MINISTRY/DIACONAL NEEDS	\$ 1,776.95
6000 MISSIONS	100.00
CP Interns	2.12
Mission To The World	100.00
Total 6000 MISSIONS	\$ 202.12
6500 CHILDREN / YOUTH MINISTRY	37.79
Childcare / Nursery	22.50
Children's Ministry	263.85
Total 6500 CHILDREN / YOUTH MINISTRY	\$ 324.14
7000 CHURCH LIFE	
Books / Literature Distribution	514.37
Member Dinner / Desserts	161.31
Pastoral Ministry (meals / travel)	1,506.03
Visitors Receptions	103.42
Total 7000 CHURCH LIFE	\$ 2,285.13
7500 COMMUNITY GROUPS	
Adult Sunday School / Training	266.68

Total 7500 COMMUNITY GROUPS	\$ 266.68
7800 FACILITIES	162.68
Office Rent	1,452.75
Worship Space	18,000.00
Total 7800 FACILITIES	\$ 19,615.43
8000 MEDIA & COMMUNICATION	
Web Page	
Development	285.00
Total Web Page	\$ 285.00
Total 8000 MEDIA & COMMUNICATION	\$ 285.00
8500 STAFF	
8501 SENIOR PASTOR	
Annuity	10,404.97
1/2 FICA	5,847.66
Life Insurance	773.50
Medical / Dental / Life Insurance	9,676.04
Professional Expenses	1,000.00
Senior Pastor Housing	41,600.00
Senior Pastor Salary	34,840.00
Total 8501 SENIOR PASTOR	\$ 98,294.51
SUPPORT STAFF	
Staff Continuing Education	500.00
Total SUPPORT STAFF	\$ 500.00
Total 8500 STAFF	\$ 98,794.51
9000 SUNDAY SERVICE MINISTRY	
Communion	15.93
Flowers	114.46
Hospitality	19.98
Total 9000 SUNDAY SERVICE MINISTRY	\$ 150.37
9500 WORSHIP	1,237.78
Copyrights	280.00
Pulpit Supply	750.00
Total 9500 WORSHIP	\$ 2,267.78
9900 START UP COSTS	
Advertising & Marketing	2,000.00
Advertising - Other	1,368.00
Outreach Events	915.47
Signage	300.00
Total Advertising & Marketing	\$ 4,583.47
Contingency	
Telephone	339.49
Total Contingency	\$ 339.49
Graphic Design	50.25
Total 9900 START UP COSTS	\$ 4,973.21
FICA	-36.79
Itinerate - Cost of Fundraising	189.72
Moving Expenses	148.10
Training	49.30
Travel	10.40
Uncategorized Expense	5,000.00

Total Expenses	<u>\$147,175.15</u>
Net Operating Income	-\$ 2,572.61
Other Income	
Interest Earned	538.76
Total Other Income	<u>\$ 538.76</u>
Other Expenses	
Penalties & Settlements	11.33
Total Other Expenses	<u>\$ 11.33</u>
Net Other Income	<u>\$ 527.43</u>
Net Income	<u><u>-\$ 2,045.18</u></u>

Budget

Jun '07 - May '08

Income

INCOME

Collections	49,244.79
Susquehanna Valley Pres	10,000.00
CP Fundraising	49,461.35
Staff Fundraising	
Total INCOME	<u>\$ 108,706.13</u>
Total Income	\$ 108,706.13

Expenses

5000 ADMINISTRATION / FINANCE

Accounting	1,000.00
Bank Charges	400.00
Equipment - Purchases	2,000.00
General Assembly	1,000.00
Insurance - liability	789.00
Insurance - Workers Comp	711.00
Legal	500.00
Miscellaneous Office	500.00
Telecommunications	2,400.00
Postage	1,200.00
Supplies	1,500.00
Total 5000 ADMINISTRATION / FINANCE	<u>\$ 12,000.00</u>

5500 MERCY MINISTRY/DIACONAL NEEDS

Diaconal Needs	750.00
Mercy Ministry Outreach	250.00
Total 5500 MERCY MINISTRY/DIACONAL NEEDS	<u>\$ 1,000.00</u>

6000 MISSIONS

CP Interns	
Payroll taxes	
Local Campus Ministry	0.00
MTW	0.00
Total 6000 MISSIONS	<u>\$ 0.00</u>

6500 CHILDREN / YOUTH MINISTRY

Children's Ministry	50.00
Children's Ministry	1,200.00
Children's Coordinator (PT)	0.00
Children's Ministry	

Jr. High/Teens (PT)	500.00
Nursery Supervisor (PT)	0.00
Total 6500 CHILDREN / YOUTH MINISTRY	\$ 1,750.00
7000 CHURCH LIFE	
Books / Literature Distribution	500.00
Member Dinner / Desserts	200.00
Pastoral Ministry (meals / travel)	2,200.00
Visitors Receptions	100.00
Study Center	
Total 7000 CHURCH LIFE	\$ 3,000.00
7500 COMMUNITY GROUPS	
Adult Sunday School/Training	200.00
Community Groups	200.00
Men/s/Women's Fellowship	
Officer Training	0.00
Total 7500 COMMUNITY GROUPS	\$ 400.00
7800 FACILITIES	
Office Rent	1,700.00
Security Deposits	0.00
Worship Space	13,800.00
Total 7800 FACILITIES	\$ 15,500.00
8000 MEDIA & COMMUNICATION	
Book Table	100.00
Duplicator	0.00
Printing & Copying	0.00
Bulletin	300.00
Newsletter	300.00
Promotional Material	300.00
Total Printing & Copying	\$ 900.00
Tapes	
Web Page	0.00
Development	0.00
ISP	0.00
Maintenance	360.00
Total Web Page	\$ 360.00
Total 8000 MEDIA & COMMUNICATION	1,360.00
8500 STAFF	
8501 SENIOR PASTOR	
Annuity	7,350.00
1/2 FICA	5,622.75
less salary reduction	2,527.25
Life Insurance	864.55
Medical / Dental / Life Insurance	13,546.60
Professional Expenses	1,000.00
Senior Pastor Housing	40,000.00
Senior Pastor Salary	33,500.00

Total Sr. Pastor Salary + Housing	<u>\$ 73,500.00</u>
Total 8501 SENIOR PASTOR PACKAGE	\$ 104,411.15
<i>*Less minimum fundraising</i>	\$ 49,461.35
<i>*Total terms of call</i>	\$ 54,949.81
ASSISTANT/ASSOCIATE PASTOR	
Annuity	
Books & Periodicals	
Life Insurance	
Med/Dental/Life Insurance	
Asst Pastor Salary	
Asst. Pastor Housing	
Total Asst. Pastor Salary + Housing	<u>0.00</u>
Total ASST PASTOR PACKAGE	\$ 0.00
SUPPORT STAFF	
Administrative Assistant	6,000.00
Payroll taxes	400.00
Staff Continuing Education	<u>5,200.00</u>
Total SUPPORT STAFF	\$ 11,200.00
Total 8500 STAFF	\$ 115,611.15
SUNDAY SERVICE MINISTRY	
Communion	0.00
Flowers	0.00
Hospitality	50.00
Music and Worship Coordinator (PT)	0.00
Information Table	<u>0.00</u>
Total SUNDAY SERVICE MINISTRY	\$ 50.00
9500 WORSHIP	
Copyrights	0.00
Miscellaneous Music	0.00
Morning Service Musicians	0.00
Music & Sound Purchases/Supplies	0.00
Music Coordinator (PT)	0.00
Pulpit Supply	1,750.00
Special Programs	<u>200.00</u>
Total 9500 WORSHIP	\$ 1,950.00
9900 START UP COSTS	
Advertising & Marketing	3,000.00
Direct Mail	0.00
Outreach Events	750.00
Printing	0.00
Signage	0.00
Advertising & Marketing - Other	<u>2,500.00</u>
Total Advertising & Marketing	\$ 6,250.00
Contingency	
Telephone	

Contingency - Other	0.00
Total Contingency	\$ 0.00
Graphic Design	0.00
Legal Fees	0.00
Office Equipment	0.00
Computer/Software	2,000.00
Copier/Printer	0.00
Fax	0.00
Furniture	2,000.00
Printer	0.00
Total Office Equipment	\$ 4,000.00
Travel	0.00
Itinerate - Cost of Fundraising Process/Placement Moving Expenses Training	500.00
	1,000.00
Total 9900 START UP COSTS	11,750.00
Total Other Expense	164,871.15
Net Other Income	
FICA	
Total Expenses	\$ 164,871.15
Net Operating Income	\$ (56,165.02)
Other Income	
Interest Earned	
Total Other Income	\$ (56,165.02)
Net Other Income	
Net Income	\$ (56,165.02)

Appendix I: A Pastor's Booklist

Are you looking for a good book to read on a particular subject? This is by no means an exhaustive list, nor does it cover nearly all the topics that could be covered. It is merely a suggestion from my own personal experience of books that I have found helpful to others or me personally. They are listed under each heading in alphabetical order by author's last name. I offer them in hopes that they may be of spiritual benefit to you.

Becoming a Christian

John Blanchard, *Ultimate Questions*

John Frame, *Apologetics to the Glory of God*

C. S. Lewis, *Mere Christianity*

John Stott, *Basic Christianity*

Christian Spiritual Growth

John Calvin, *The Golden Booklet of the True Christian Life*

Bryan Chappell, *Holiness by Grace*

Jonathan Edwards, *Charity and Its Fruits*

Sinclair Ferguson, *A Heart for God*

Sinclair Ferguson, *Children of the Living God*

Sinclair Ferguson, *Grow in Grace*

Sinclair Ferguson, *John Owen on the Christian Life*

John Flavel, *Keeping the Heart*

James Packer, *A Quest for Godliness*

J. C. Ryle, *Holiness*

Understanding the Bible

Mortimer Adler, *How to Read a Book*

F. F. Bruce, *The New Testament Documents: Are They Reliable?*

Gordon Fee, *How to Read the Bible for All It's Worth*

Richard Gaffin, *Resurrection and Redemption*

R. C. Sproul, *Knowing Scripture*

Herman Ridderbos, *When the Time Had Fully Come*

Geerhardus Vos, *Biblical Theology*

Geerhardus Vos, *The Kingdom and the Church*

Understanding the Church

Augustine, *City of God*

Preston Graham, *A Kingdom Not of This World*

Michael Horton, *Beyond Culture Wars*

Leslie Newbigin, *The Gospel in a Pluralist Society*

John Piper, *Let the Nations Be Glad*

Understanding Your World

Allan Bloom, *The Closing of the American Mind*

Francis Bremer, *The Puritan Experiment*

Stephen Carter, *The Culture of Disbelief*

C. C. Goen, *Broken Churches, Broken Nation*

Nathan Hatch, *The Democratization of American Christianity*

James Davison Hunter, *Culture Wars*

Roger Lundin, *The Culture of Interpretation: Christian Faith and the Postmodern World*

George Marsden, *Fundamentalism and American Culture*

George Marsden, *The Outrageous Idea of Christian Scholarship*

Mark Noll, *The Scandal of the Evangelical Mind*

Albert Raboteau, *Slave Religion*

Herbert Schlossberg, *Idols for Destruction*

Harry Stout, *The New England Soul*

The Knowledge of God

C. FitzSimmons Allison, *The Cruelty of Heresy*

John Calvin, *Truth for All Time*

John Calvin, *Institutes of the Christian Religion*

A. A. Hodge, *Evangelical Theology*

A. A. Hodge, *The Confession of Faith*

J. Gresham Machen, *Christianity and Liberalism*

James Packer, *Knowing God*

Thomas Watson, *A Body of Divinity*

Personal Worship and Prayer

Augustine, *Confessions*

Arthur Bennett, *The Valley of Vision*

John Bunyan, *Grace Abounding to the Chief of Sinners*

Charles Spurgeon, *various devotionals*

B. M. Palmer, *Theology of Prayer*

Henry Scudder, *The Christian's Daily Walk*

Trinity Psalter

Geerhardus Vos, *Grace and Glory*

George Whitefield, *Journals*

Spiritual Warfare and Satanic Attack

Thomas Brooks, *Precious Remedies Against Satan's Devices*

William Gurnall, *The Christian in Complete Armor*

C. S. Lewis, *The Screwtape Letters*

Kris Lundgaard, *The Enemy Within*

Spiritual Gifts and Christian Experience

Jonathan Edwards, *Religious Affections (abridged version)*

Richard Gaffin, *Perspectives on Pentecost*

Francis Schaeffer, *True Spirituality*

C. R. Vaughan, *The Gifts of the Holy Spirit*

Spiritual Depression and Inner Turmoil

William Bridge, *A Lifting Up for the Downcast*

John Colquhoun, *Spiritual Comfort*

Rose Marie Miller, *From Fear to Freedom*

Richard Sibbes, *The Bruised Reed and Smoking Flax*

Richard Sibbes, *The Souls Conflict with Itself, and Victory over Itself, by Faith*

Ed Welch, *When People Are Big and God Is Small*

Suffering

Elizabeth Elliott, *A Path through Suffering*

Dan McCartney, *Why Does It Have To Hurt?*

Contentment

Jeremiah Burroughs, *The Rare Jewel of Christian Contentment*

Family

Marriage

Larry Crabb, *The Marriage Builder*

Edna Gerstner, *Jonathan and Sarah, An Uncommon Union*

C. J. Mahaney, *Sex, Romance and the Glory of God*

B.M. Palmer, *The Family*

William J. Petersen, *Martin Luther Had a Wife*

Ed Wheat, *Love Life for Every Married Couple*

Children and Youth

Susan Hunt, *Heirs of the Covenant*

Paul David Tripp, *Age of Opportunity*

Ted Tripp, *Shepherding a Child's Heart*

Family Worship

J. W. Alexander, *Thoughts on Family Worship*

Starr Meade, *Training Hearts, Teaching Minds*

Donald Van Dyken, *Rediscovering Catechism*

Thomas Vincent, *The Shorter Catechism Explained from Scripture*

For the best prices, contact the following book services:

Cumberland Valley Bible Book Service

PO Box 613

Carlisle, PA 17013

(800) 656 0231

www.cvbbs.com

Trinity Book Service

PO Box 395

Montville, NJ 07045

(800) 722 3584

www.trinitybookservice.org

Christian Book Distributors

Box 6000

Peabody, MA 01961-6000

(508) 977 5000

www.christianbook.com

Westminster Bookstore

2960 W. Church Rd.

Glenside, PA 19038

Phone 1-888-WTSBOOK (888-987-2665) or 215-886-0999

Fax 215-886-1025

www.wtsbooks.edu

Appendix II: Personal Involvement in the Spread of the Gospel in Reading and Berks County

1 Thessalonians 1:5-8 (ESV) 5 because our gospel came to you not only in word, but also in power and in the Holy Spirit and with full conviction... 6 And you became imitators of us and of the Lord, for you received the word in much affliction, with the joy of the Holy Spirit, 7 so that you became an example to all the believers in Macedonia and in Achaia. 8 For not only has the word of the Lord sounded forth from you in Macedonia and Achaia, but your faith in God has gone forth everywhere, so that we need not say anything.¹⁷

Rodney Stark's *The Rise of Christianity* (HarperCollins, 1997) suggests three factors in the incredible expansion of Christianity in its early years: a refreshingly new theology with an incredible power to explain life, which issued in tangible acts of mercy, working primarily through the social networks of Christians from all nations and backgrounds. Over 14,000 lay people were asked the question:¹⁸ "What or who was responsible for your coming to Christ in your church?"¹⁹

- 1-2% special need
- 2-3% walked in
- 5-6% pastor
- 1-2% visitation
- 4-5% Sunday school
- 5% evangelistic crusade
- 2-3% church program
- **75-90%** **friend/relative**

Personal networking is one of the most effective ways for the gospel to provide long-term fruit. It is nothing more than intentionally building genuine relationships with people as a way of life in order to understand them, to communicate our own growing knowledge of God to them, and reach out to them with tangible acts of love and mercy. **This is the critical difference between *addition* and *multiplication* in ministry.**

Think about your own relational networks:

- | | |
|---|---|
| <ul style="list-style-type: none"> ❖ Personal networking (people in your neighborhood, immediate and extended family, school/workplace, and other friends not in those categories): <ul style="list-style-type: none"> ➤ friends ➤ neighbors ➤ business connections ➤ political connections ➤ religious and social connections ➤ persons you consistently see at the same | <ul style="list-style-type: none"> <ul style="list-style-type: none"> ▪ restaurants ▪ gas stations ▪ cleaners ▪ grocery stores ▪ neighborhoods ▪ malls ❖ Circles of Influence Networking (try to think of groups that you meet with regularly that share a common interest with you) <ul style="list-style-type: none"> ➤ sports programs: soccer, baseball, basketball, volleyball, etc. |
|---|---|

- | | |
|---|--|
| <ul style="list-style-type: none"> ➤ music programs: band, choir, private lessons and recitals ➤ PTA ➤ Homeowners Association -- meetings, activities and events ➤ Neighborhood Watch ➤ Service Clubs as a volunteer or officer. ➤ School Athletic Booster chaperone, concession stand. ➤ Chamber Of Commerce -- weekly mixers, banquets and dinners. ➤ Preschool moms ➤ carpools ➤ golf or country club ➤ service organizations -- food/clothing banks, homeless shelters | <ul style="list-style-type: none"> ➤ health clubs ➤ block parties ➤ coffee shops ➤ garage sales ➤ babysitting ➤ walking or jogging groups ➤ community service groups ➤ city government and council meetings ➤ students <ul style="list-style-type: none"> ▪ student organizations ▪ yearbook ▪ school newspaper ▪ sports associations ▪ glee club ▪ etc. |
|---|--|

How well do you really know your friends and family? The next time you are with them, consider asking them:

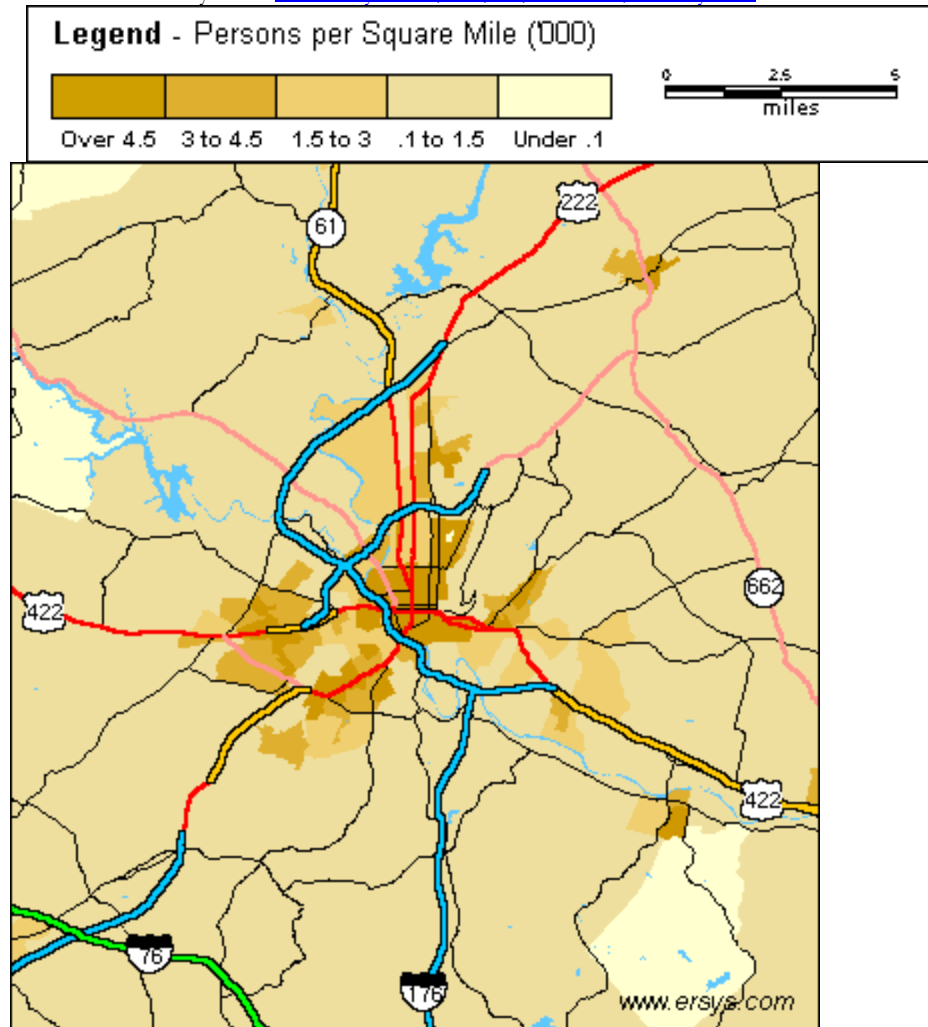
- ❖ How long have you lived here?
- ❖ What do you like most about the city? Your own community?
- ❖ What do you dislike most about the city? Your own community?
- ❖ What are the most important issues people are facing here? What are their most important hopes? Fears?
- ❖ What does it mean to be a good neighbor here?
- ❖ What would a church look like that truly served you and your friends?
- ❖ What do people here do for fun?²⁰

Decide beforehand that fear of rejection is *not* a reason for avoiding talking to someone. Remember that we are about building genuine relationships (including genuineness about our own faith). While the *gospel* will confront people inwardly, our *methods and demeanor* ought to be personally winsome, designed to provide the human bridge to the gospel which is the normal path that most people walk when they come to faith in Jesus.

Depending on the situation, you may want to suggest a lunch meeting with the pastor, your friend and you, in a neutral place for the purpose of an open-ended discussion and Q & A about the gospel. You could also consider inviting them to any service, community group or other meeting of the church. It often takes 6-8 or more exposures to the gospel for someone to respond, so be patient and persist in love. But always remember that only the Holy Spirit can convert someone – that takes all the pressure off you to push for a “decision”, and lets you focus on genuinely loving them, genuinely talking about your faith in and love for Jesus Christ, and prayer.

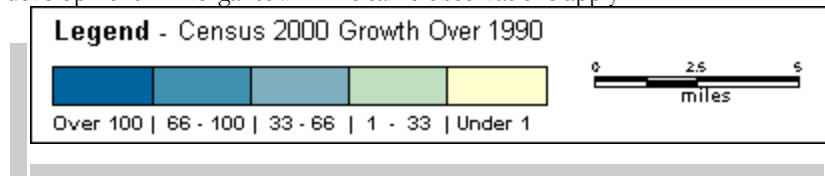
Notes

¹ Earth Research Systems www.ersys.com/usa/42/4263624/density.htm

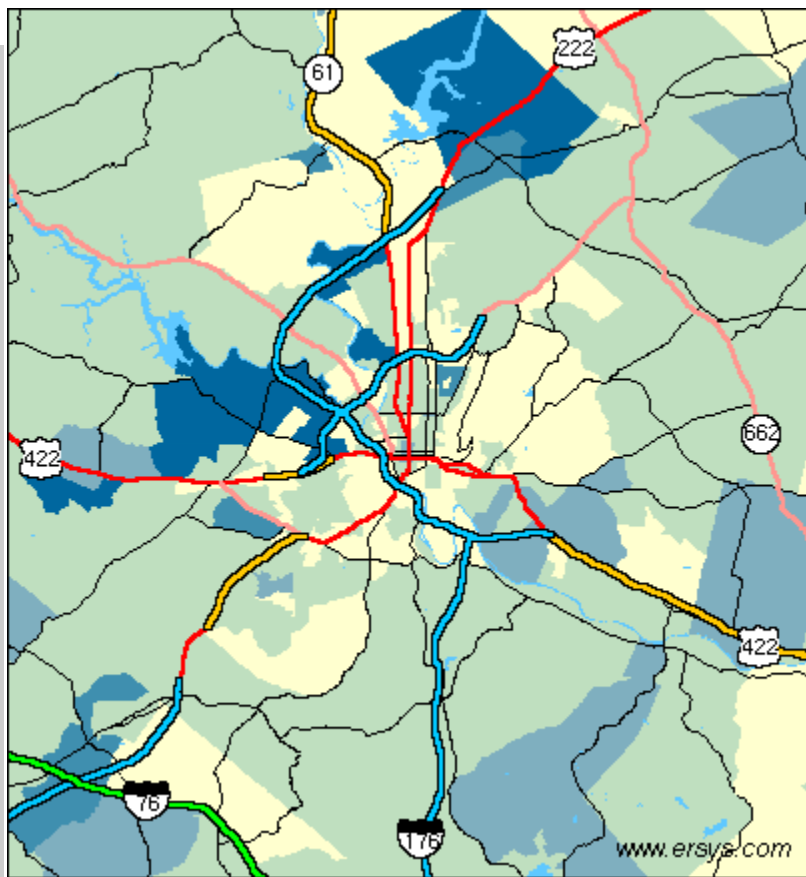


² www.thearda.com. The American Religion Data Archive is housed at the Pennsylvania State University in the Department of Sociology and the Social Science Research Institute.

³ Earth Research Systems www.ersys.com/usa/42/4263624/growth.htm. Note also the new Morgan development in Morgantown. The same observations apply.



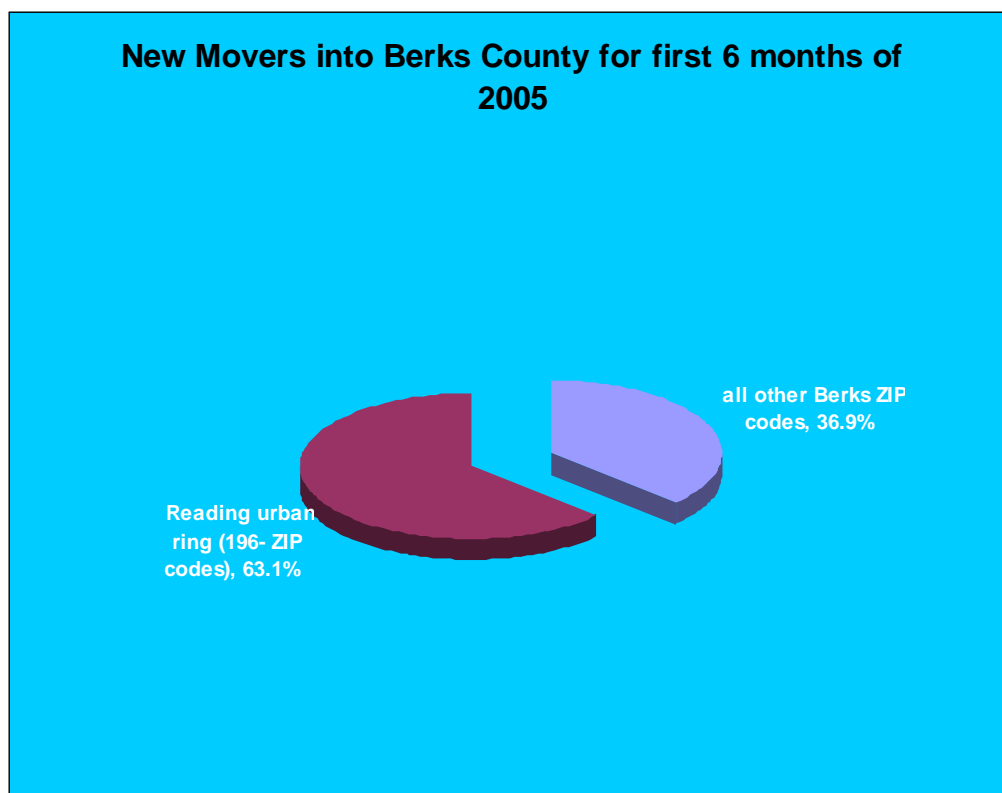
| 1 | 2 | 3 | 4 | 5 |



Reading city proper experienced a growth rate of 4.29%, nearly 4 times greater than Lancaster (1.13%), Allentown (1.1%), and Wilmington, DE (1.59%).

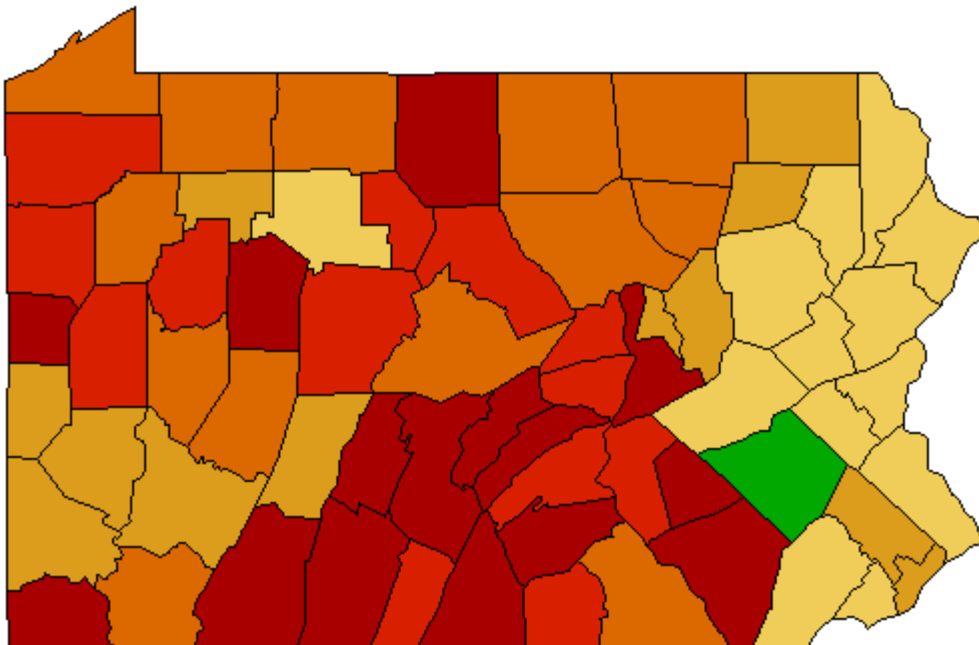
*Note that growth rates as a percentage of population will be skewed higher in the outlying areas, since the population there was the lowest to start with, and there is more available property to be developed. Also, it is important to consider that the development growth in the outlying areas may be limited by lot size restrictions and density limits imposed by local governments, and will be further limited to a socioeconomic population able to afford new construction in those areas.

⁴ Data from Tower Publishing, e-mail from Mary Anne Hildreth.



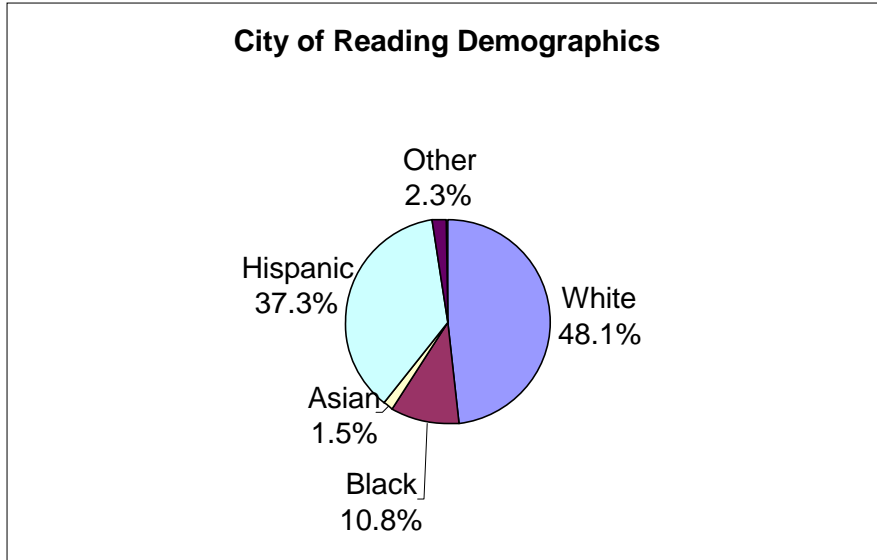
⁵ www.thearda.com. Note that neighboring Lancaster County ranks #1 in percentage of evangelical adherents at 18.9%. Note that Philadelphia (largest PA city) comes in slightly higher at # 50! In fact, of the 5 largest cities in PA, only Allentown (3rd-largest) ranks slightly lower than Reading in percentage of evangelical adherents, coming in at #56 in state rank, while Pittsburgh (2nd-largest), and Erie (4th-largest) are both higher.

EVANGELICAL DENOMINATIONS--Rates of adherents per 1000 population (2000)



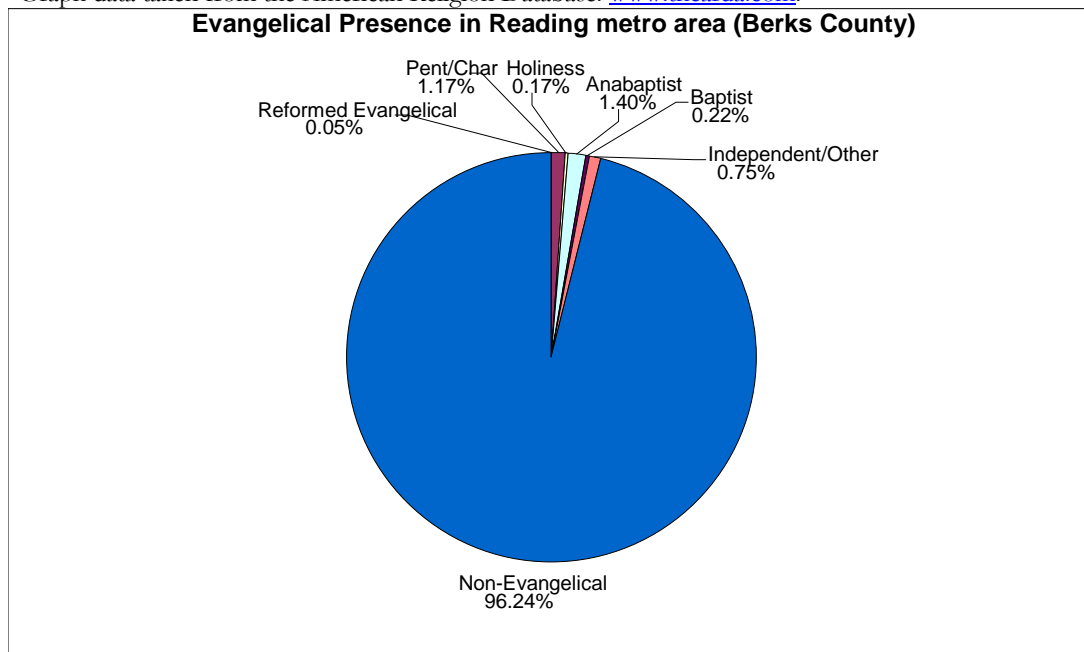
■ Berks, PA: $39.5543/1000 = 3.96\%$ (Rank: 52)

6



⁷ Percept demographic study (Ministry Area Profile) prepared for The Reading Project, p. 1 (emphasis added).

⁸ Graph data taken from the American Religion Database: www.thearda.com.



Note: By far, the largest “religious” group in Reading are *those who claim no religious affiliation whatsoever* at 46%, followed by mainline Protestant and Roman Catholic.

⁹ See also *Luke 24:27 (ESV) And beginning with Moses and all the Prophets, he interpreted to them in all the Scriptures the things concerning himself.*

1 Corinthians 10:16-17 (ESV) The cup of blessing that we bless, is it not a participation in the blood of Christ? The bread that we break, is it not a participation in the body of Christ? Because there is one bread, we who are many are one body, for we all partake of the one bread.

Ephesians 2:13-22 (ESV) For he himself is our peace, who has made us both one and has broken down in his flesh the dividing wall of hostility ... For through him we both have access in one Spirit to the Father. So then you are no longer strangers and aliens, but you are fellow citizens with the saints and members of the household of God, built on the foundation of the apostles and prophets, Christ Jesus himself being the cornerstone, in whom the whole structure, being joined together, grows into a holy temple in the Lord. In him you also are being built together into a dwelling place for God by the Spirit.

¹⁰Psal 40:7, Matt 11:10, Matt 26:24, Matt 26:31, Mark 14:21, Mark 14:27, Luke 2:23, Luke 24:46-7, Acts 13:33, Acts 15:15, Roma 1:17, Roma 9:33, Roma 11:26, Roma 14:11, 1Cor 15:45, Gala 3:13, Hebr 10:7

¹¹ See also “. . . you became examples to all in Macedonia and Achaia who believe. 8 For from you the word of the Lord has sounded forth, not only in Macedonia and Achaia, but also in every place. Your faith toward God has gone out, so that we do not need to say anything.” (1 Thess. 1:7)

“that you may become blameless and harmless, children of God without fault in the midst of a crooked and perverse generation, among whom you shine as lights in the world,” (Phil 2:15)

Exodus 20:3 (ESV) “You shall have no other gods before me.

Isaiah 29:13 (ESV) And the Lord said: “. . . this people draw near with their mouth and honor me with their lips, while their hearts are far from me, and their fear of me is a commandment taught by men,

John 4:23-24 (ESV) But the hour is coming, and is now here, when the true worshipers will worship the Father in spirit and truth, for the Father is seeking such people to worship him. God is spirit, and those who worship him must worship in spirit and truth.”

Hebrews 9:14 (ESV) how much more will the blood of Christ, who through the eternal Spirit offered himself without blemish to God, purify our conscience from dead works to serve the living God.

1 Corinthians 14:24-25 (ESV) But if all prophesy, and an unbeliever or outsider enters, he is convicted by all, he is called to account by all, the secrets of his heart are disclosed, and so, falling on his face, he will worship God and declare that God is really among you.

¹² See also *“To me, who am less than the least of all the saints, this grace was given, that I should preach among the Gentiles the unsearchable riches of Christ,” (Eph. 3:8)*

“To them God willed to make known what are the riches of the glory of this mystery among the Gentiles: which is Christ in you, the hope of glory. Him we preach, warning every man and teaching every man in all wisdom, that we may present every man perfect in Christ Jesus. To this [end] I also labor, striving according to His working which works in me mightily.” (Col. 1:27-29)

1 Corinthians 11:23-26 (ESV) For I received from the Lord what I also delivered to you, that the Lord Jesus on the night when he was betrayed took bread, and when he had given thanks, he broke it, and said, “This is my body which is for you. Do this in remembrance of me.” In the same way also he took the cup, after supper, saying, “This cup is the new covenant in my blood. Do this, as often as you drink it, in remembrance of me.” For as often as you eat this bread and drink the cup, you proclaim the Lord’s death until he comes.

“And this gospel of the kingdom will be preached in all the world as a witness to all the nations, and then the end will come.” (Matt 24:14)

“And Jesus came and spoke to them, saying, “All authority has been given to Me in heaven and on earth. “Go therefore and make disciples of all the nations, baptizing them in the name of the Father and of the Son and of the Holy Spirit, “teaching them to observe all things that I have commanded you; and lo, I am with you always, [even] to the end of the age.” Amen.” (Matt 28:18-20)

“And the Scripture, foreseeing that God would justify the Gentiles by faith, preached the gospel to Abraham beforehand, [saying], “In you all the nations shall be blessed.” (Gal. 3:8)

“but we will give ourselves continually to prayer and to the ministry of the word.” (Acts 6:4)

“you also helping together in prayer for us, that thanks may be given by many persons on our behalf for the gift [granted] to us through many.” (2 Cor. 1:11)

¹³ See also *“And I will give you shepherds according to My heart, who will feed you with knowledge and understanding.” (Jer. 3:15)*

“Therefore thus says the Lord God of Israel against the shepherds who feed My people: “You have scattered My flock, driven them away, and not attended to them. Behold, I will attend to you for the evil of your doings,” says the Lord.” (Jer. 23:2)

“I will set up shepherds over them who will feed them; and they shall fear no more, nor be dismayed, nor shall they be lacking,” says the Lord.” (Jer. 23:4)

“Therefore take heed to yourselves and to all the flock, among which the Holy Spirit has made you overseers, to shepherd the church of God which He purchased with His own blood.” (Acts 20:28)

“Shepherd the flock of God which is among you, serving as overseers, not by compulsion but willingly, not for dishonest gain but eagerly;” (1 Pet. 5:2)

¹⁴ See also *Luke 13:22 (ESV) He went on his way through towns and villages, teaching and journeying toward Jerusalem.*

Acts 15:21 (ESV) For from ancient generations Moses has had in every city those who proclaim him, for he is read every Sabbath in the synagogues."

He went into every city, to preach... Nor did he excuse himself from going to the cities with this, that there were some from the cities that came to him; for, though there were, yet the most had not zeal enough to bring them to him, and therefore such is his wonderful condescension that he will go to them; for he is found of those that sought him not, Isa. 65:1. Here was, it seems, a vast concourse, much people were gathered together, abundance of fish to cast their net among; and he was as ready and willing to teach as they were to be taught." – Matthew Henry, *Commentary on the whole Bible* (Lk 8:4).

¹⁵ Note that the population ages as one moves further away from the city. Earth Research Systems:

<http://www.ersys.com/usa/42/4263624/age.htm>.

¹⁶ BCO 21-6, 24-5, 57.

¹⁷ See also: *John 1:41 (ESV) 41 He first found his own brother Simon and said to him, "We have found the Messiah" (which means Christ)... 45 Philip found Nathanael and said to him, "We have found him of whom Moses in the Law and also the prophets wrote, Jesus of Nazareth, the son of Joseph."*

Mark 2:14 (ESV) 14 And as he passed by, he saw Levi the son of Alphaeus sitting at the tax booth, and he said to him, "Follow me." And he rose and followed him. 15 And as he reclined at table in his house, many tax collectors and sinners were reclining with Jesus and his disciples, for there were many who followed him.

*"The primary change agents in the spread of faith... were the men and women who earned their livelihood in some purely secular manner, and spoke their faith to those whom they met in this natural fashion." Kenneth Scott Latourette, *A History of the Expansion of Christianity*, Volume I, page 116.*

*"... the primary means of [Christianity's] growth was through the united and motivated efforts of the growing numbers of Christian believers, who invited their friends, relatives, and neighbors to share the 'good news.'" Rodney Stark, *The Rise of Christianity*, page 208.*

*"... the active missionary travel of people like Paul was reinforced by a sort of 'contagion' (as later pagan opponents were to describe it) from new converts in an area... privacy was rare... news or rumor would travel rapidly... contact with fellow artisans and their customers often provided the first contacts in the city." Wayne Meeks, *The First Urban Christians*, pages 27-29.*

¹⁸ Some of the following material is adapted from the July 2005 GCA Church Planter Training Seminar notebook, pp. 2-3ff.

¹⁹ Win Arn, *The Master's Plan for Making Disciples*, page 43

²⁰ adapted from Tom Allen, *Understanding One's Community*